

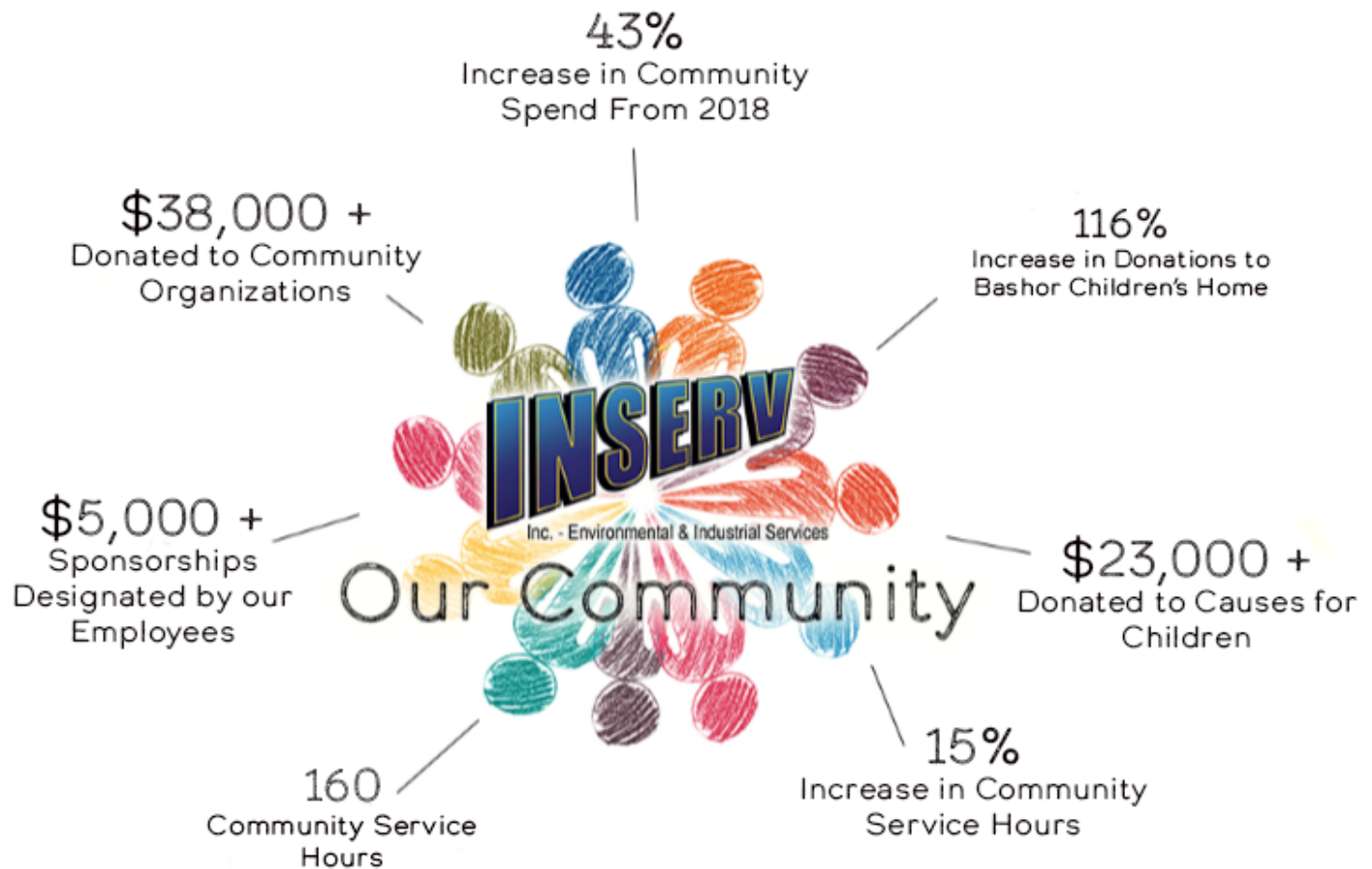


Inc. - Environmental & Industrial Services

2019 Community Service & Charitable Donations Report



Our Community



Everyone at INSERV, Inc. is dedicated to giving back to our community.

If you are looking for sponsorship involvement from INSERV, Inc. please email us at marketing@inserv24-7.com and we will review your request.

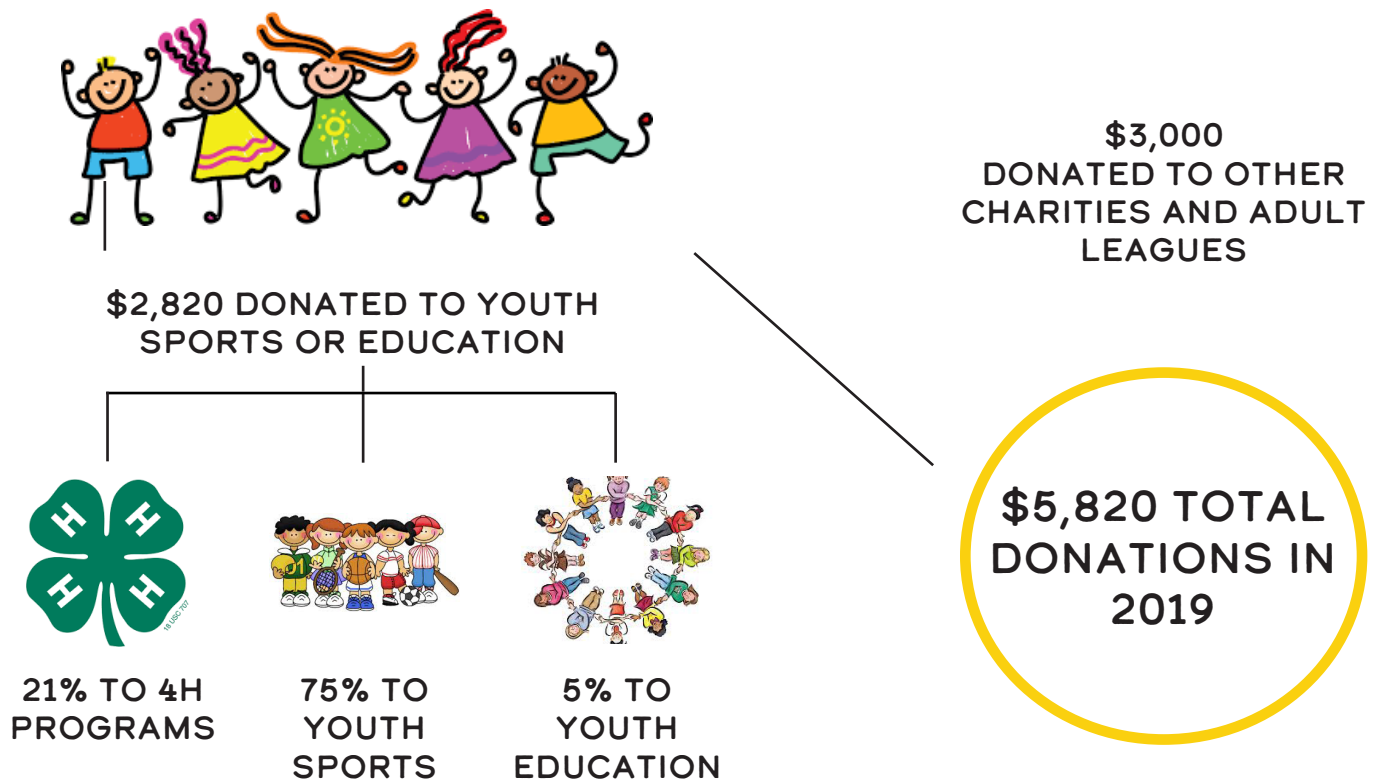
Employee Sponsorship

Employee sponsorships include any sponsorship or donation to an organization that employees present to our marketing department.

2018 VS 2019

2018 Total	2019 Total	Difference	Diff %
\$1,000	\$5,820	\$4,820	482%

We consider our employees our greatest asset and we recognize that our employees have interests and commitments outside of work. We are proud to be a part of those activities as sponsors. We are dedicated to the continuation of this program in 2020.



Bashor Children's Home

Bashor Children's Home is located in Goshen, Indiana and specializes in providing troubled children and their families with residential care, day treatment & alternative education, foster care, and rehabilitation.

Those at Bashor strive to provide the best care for all children and families that seek help.

INSERV, Inc. was proud to sponsor Bashor's 'Running with Spoons' event that was held on September 5th at the Crystal Ballroom at The Lerner Theatre.

In addition to event sponsorship, we provided tickets for our employees to attend and enjoy the event.

The proceeds from this event help support programs at Bashor Children's Home that care for survivors of human trafficking and further their mission to provide "Help for Today...Hope for Tomorrow".



Total 2019 Donations and Volunteer Work at Bashor Children's Home



Event Sponsorship	- \$5,000
Event Donations	- \$2,500
Event Tickets	- \$450
Total Donations	\$7,950



Our employees spent over **163 hours** at Bashor Children's Home this year helping with various projects.



Employee Donation	- \$10,255
INSERV, Inc. Match	- \$11,665
Total Donations	\$21,920

TOTAL DONATIONS TO BASHOR IN 2019 = \$29,870

2019 Charitable Giving Overview

Total Event Sponsorships
\$2,902

Total Employee Sponsorships
\$5,820

2019 Total
Donation Amount
\$38,657

Total Community Donations
\$29,935

90% Increase in Charitable Donations
From 2018

Over \$23,000 Donated to Causes for
Children

Charitable Type	2018 Total	2019 Total	Difference	%
Year Total Charitable Doantions	\$24,946	\$35,755	\$10,809	43.3%
Bashor - Running with Spoons	\$3,670	\$7,950	\$4,280	116.6%
Bashor General Donations	\$8,533	\$11,666	\$3,133	36.7%
Center for Hospice Care	\$3,100	\$3,025	-\$75	-2.4%
General Donations to Charities/Causes for Kids	\$5,593	\$4,294	-\$1,299	-23.2%
Donations/Sponsorships to Employee Causes	\$1,000	\$5,820	\$4,820	482%
Other Charitable Donations	\$3,050	\$3,000	-\$50	-1.6%





Trusted Environmental & Industrial Services | Where Safety is Paramount!



Inc. - Environmental & Industrial Services

Mishawaka, IN | South Bend, IN | Indianapolis, IN | Savanna, IL | Wright City, OK

- Environmental & Industrial Services
- 24/7 Emergency Services
- Hydro Excavation Services
- Construction Services
- Seasonal Services
- Rail Services
- Hazardous & Non-Hazardous Waste Services

Check Us Out Online @ www.INSERV24-7.com

Providing professional, safe, and responsive services for our customers since 2003.

Find Us On



514 E. Marion St., Mishawaka, IN. 46545

Office: 574.968.0372 | Fax: 574.968.0373 | 24-Hr: 877.917.3239

Copyright INSERV, Inc. 2019